

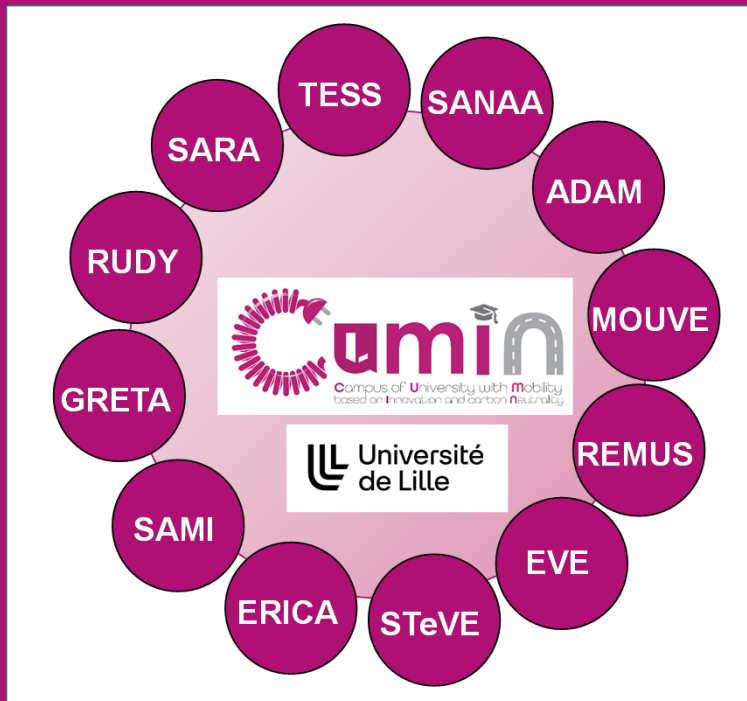


<https://cumin.univ-lille.fr/>

CUMIN - SARA

## Technical and socio-behavioural tests of electrified vehicles by campus users

E. Castex (TVES), E. Aguirre (L2EP),  
Lpro students (ULille)

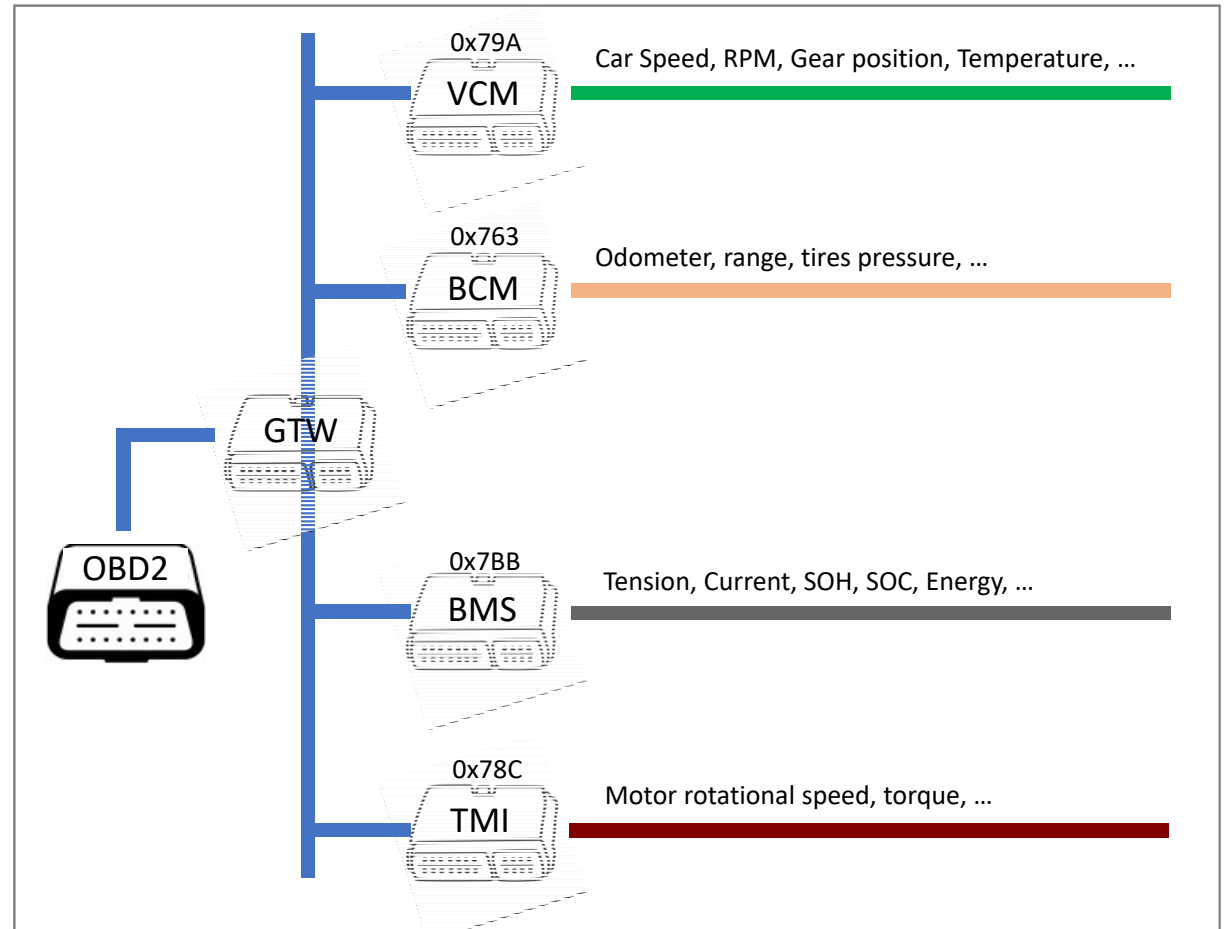


# Nissan LEAF as the reference vehicle

Nissan LEAF

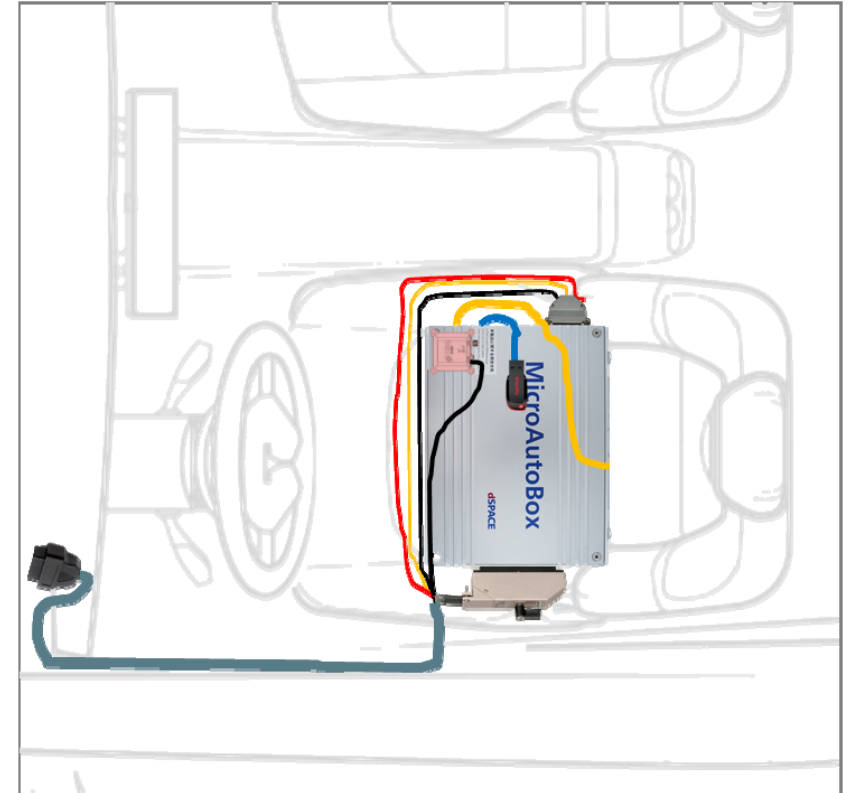
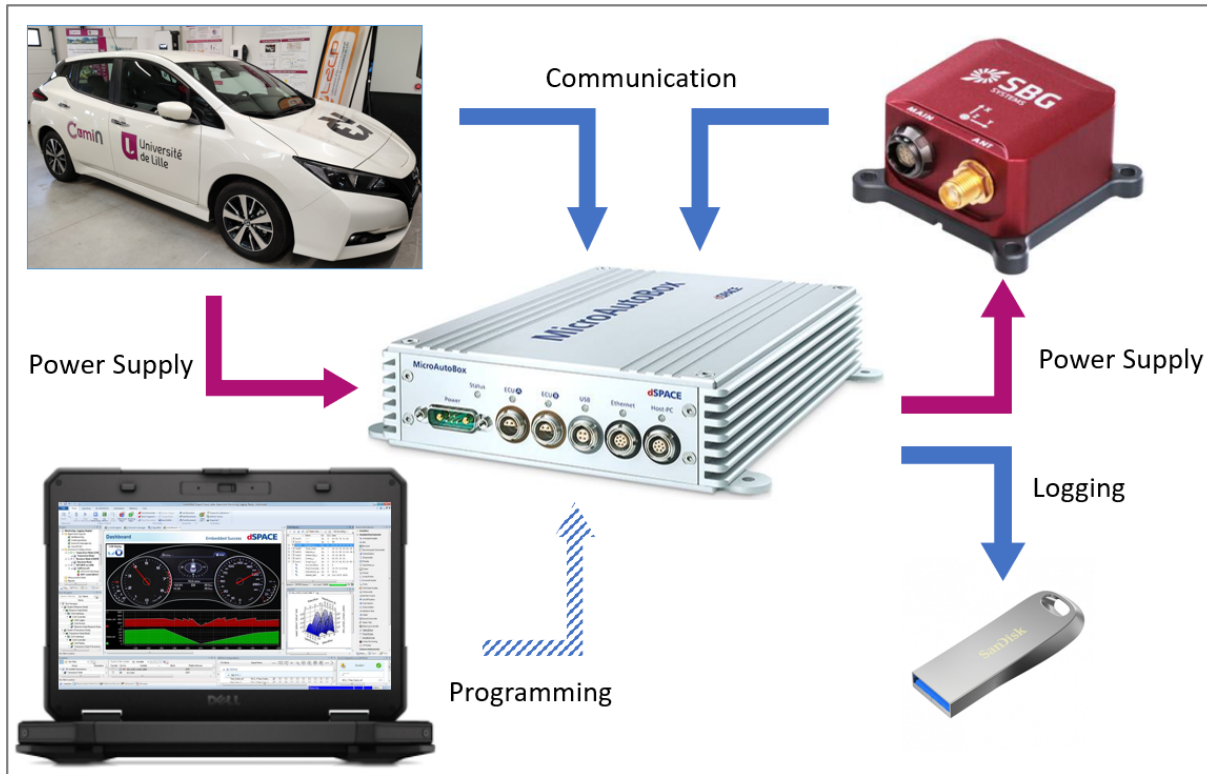


Overview	
Acceleration 0-100km	7.9 s
Max speed	144 km/h
CO2 emissions while driving	0 g/km
Range (WLTP combined cycle)	270 km
Range (WLTP city driving cycle)	389 km



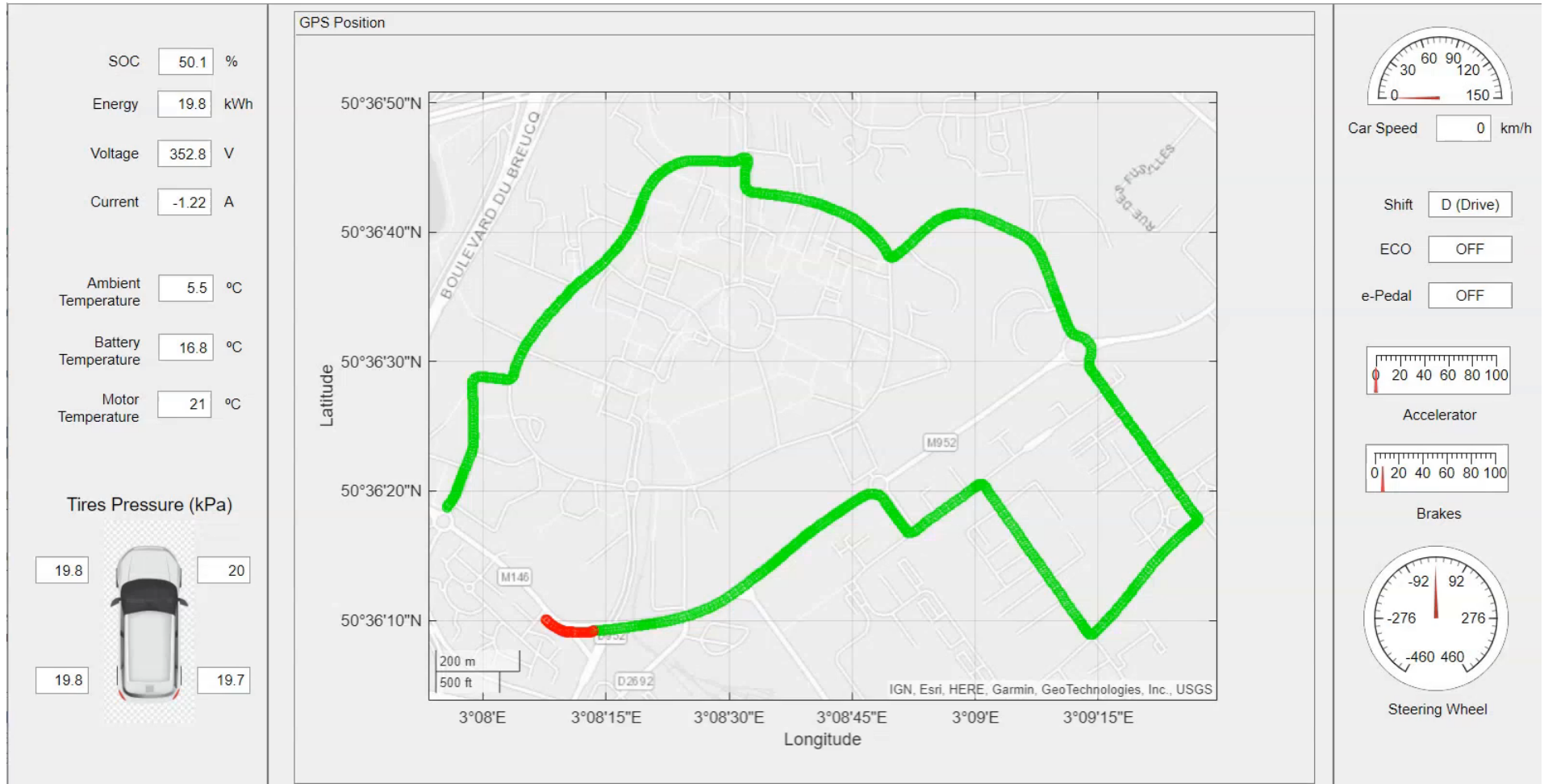
CAN Communication

# Instrumentation

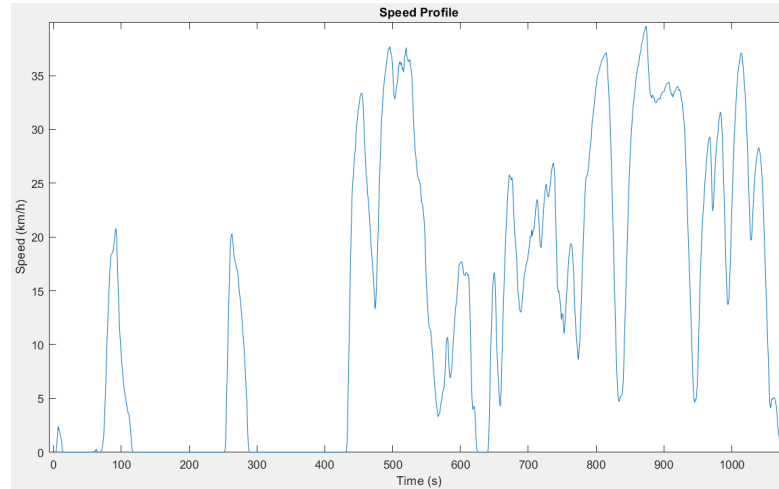


Embedded Instrumentation

# Data logging



# Tests



Speed profile

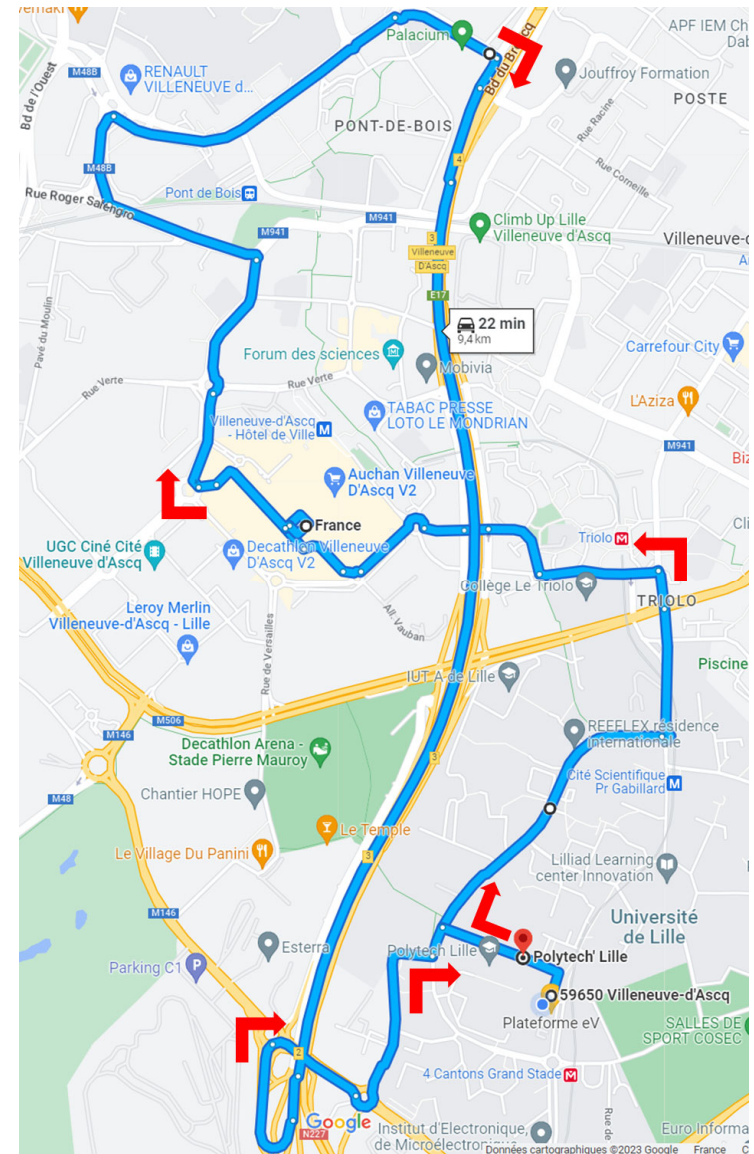
Home town	Type	Max speed (km/h)	Trip length (km)
Villeneuve-d'Ascq	Urban	50	4
Lille	Urban	50	7
Baisieux	Mixed	90	9
Roubaix	Mixed	90	16
Orchies	Highway	130	20
Armentières	Highway	110	27

Representative daily trips

# Survey

Licence Pro  
Cartographie, Topographie et SIG

Lise Rolland  
Laura Blondeel  
Valentin Dhieux  
Thomas Le Bourlout



Driving test circuit





<https://cumin.univ-lille.fr/>

## CUMIN programme

Our campus as  
an exciting living lab  
towards eco-cities!

